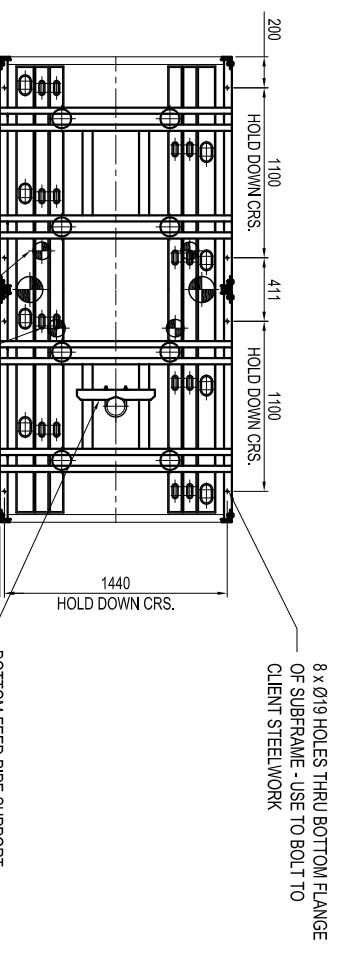
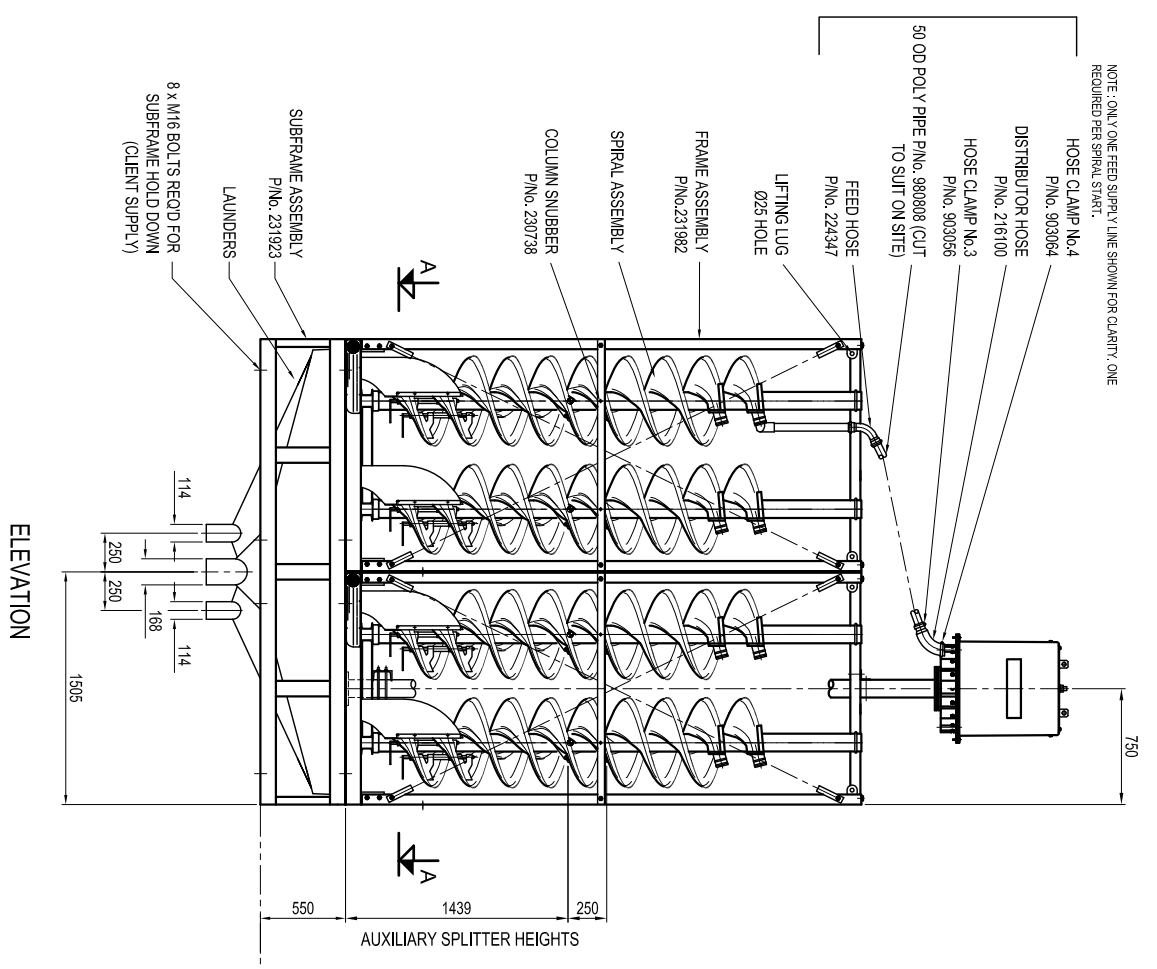


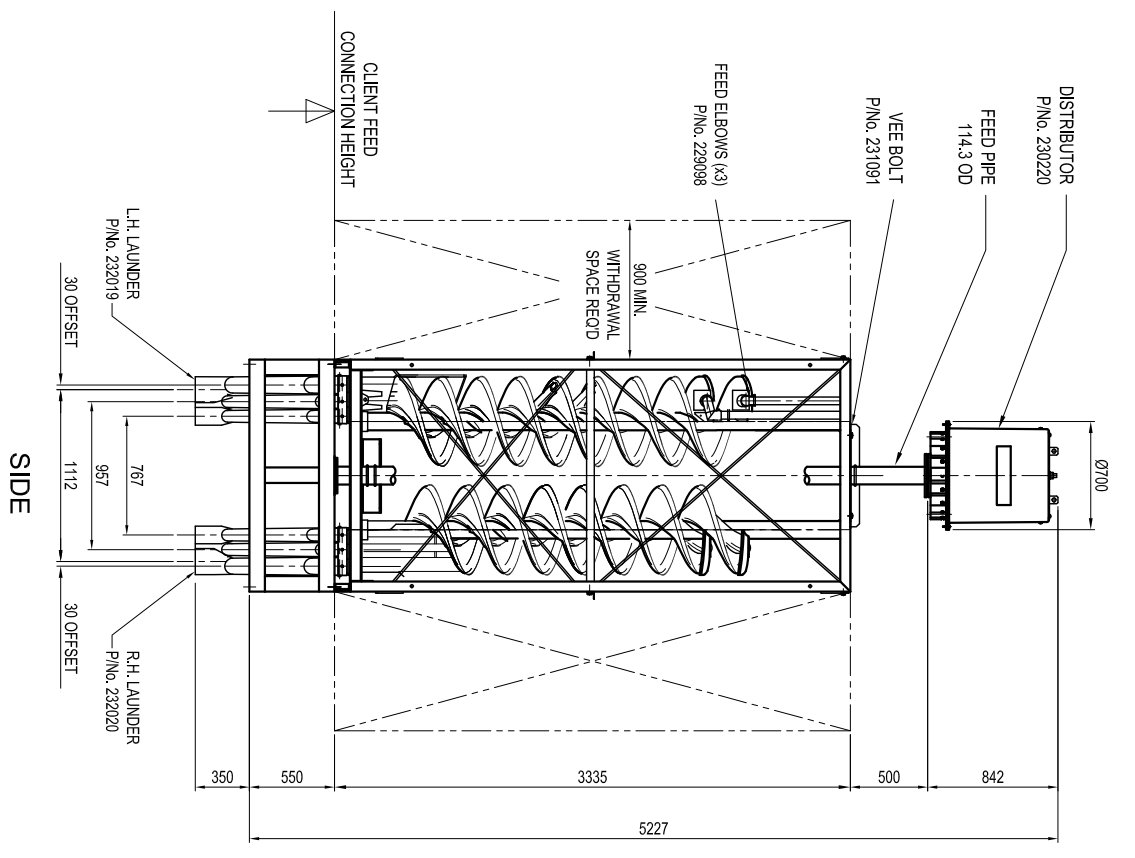
PLAN
NOTE: DISTRIBUTOR & SECTION AA NOT SHOWN FOR CLARITY



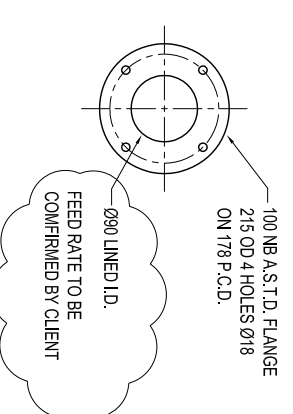
SECTION A-A



ELEVATION



SIDE



FEED CONNECTION DETAIL
NOT TO SCALE

ESTIMATED MASS DRY MODULE	1.44 tonnes
---------------------------	-------------

REVISION	NO.	DESCRIPTION	DATE	CHECKED
A	GRND	ISSUED FOR CLIENT APPROVAL	24.03.09	J.S.S.

NO.	DESCRIPTION	DATE	CHECKED
1	LAUNDRER ASSEMBLY	24.03.09	J.S.S.
2	FEED PIPE	24.03.09	J.S.S.
3	DISTRIBUTOR ASSEMBLY	24.03.09	J.S.S.
4	SUBFRAME ASSEMBLY	24.03.09	J.S.S.
5	FRAME ASSEMBLY	24.03.09	J.S.S.
6	SPIRAL ASSEMBLY	24.03.09	J.S.S.

Copyright © RESERVED
The design as detailed on this drawing is the property of Dowler ED Mining - MINERAL TECHNOLOGIES and/or its Associates and must be returned on demand. It is issued on the strict condition that except with the written permission of the issuing party, it is not to be used for any purpose other than that stated in the particular enquiry, order or contract with which it is issued. The reservation of copyright in this document extends from each date appearing hereon and in respect of the subject matter as it appeared at the relevant date.

PROJECT	Mineral Technologies
TITLE	GENERAL ARRANGEMENT - BANK OF 8 VHG TWIN START SPIRALS - BE MK.7 FEED SYSTEM, SUBFRAME & ENGAGED LAUNDERS
SCALE	1:25
DO NOT SCALE	
AutoCAD	CE-5619
REV.	A
ANGLES	3rd ANGLE