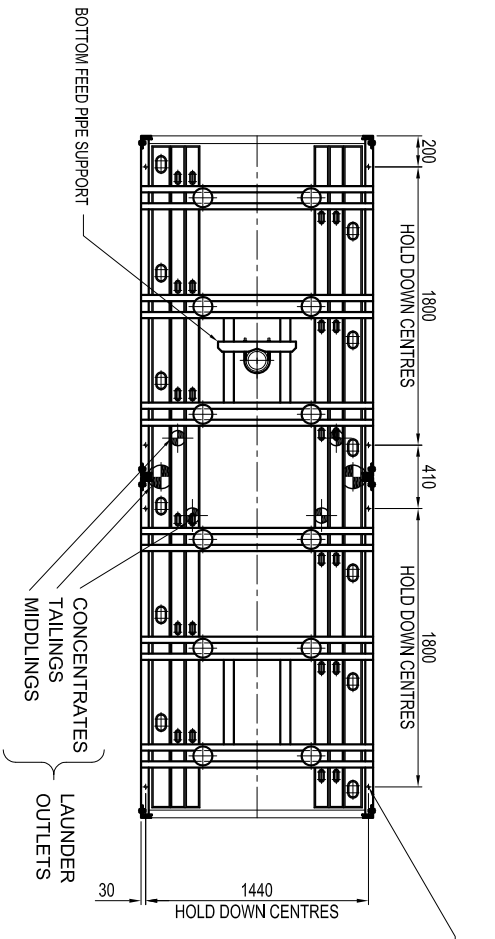
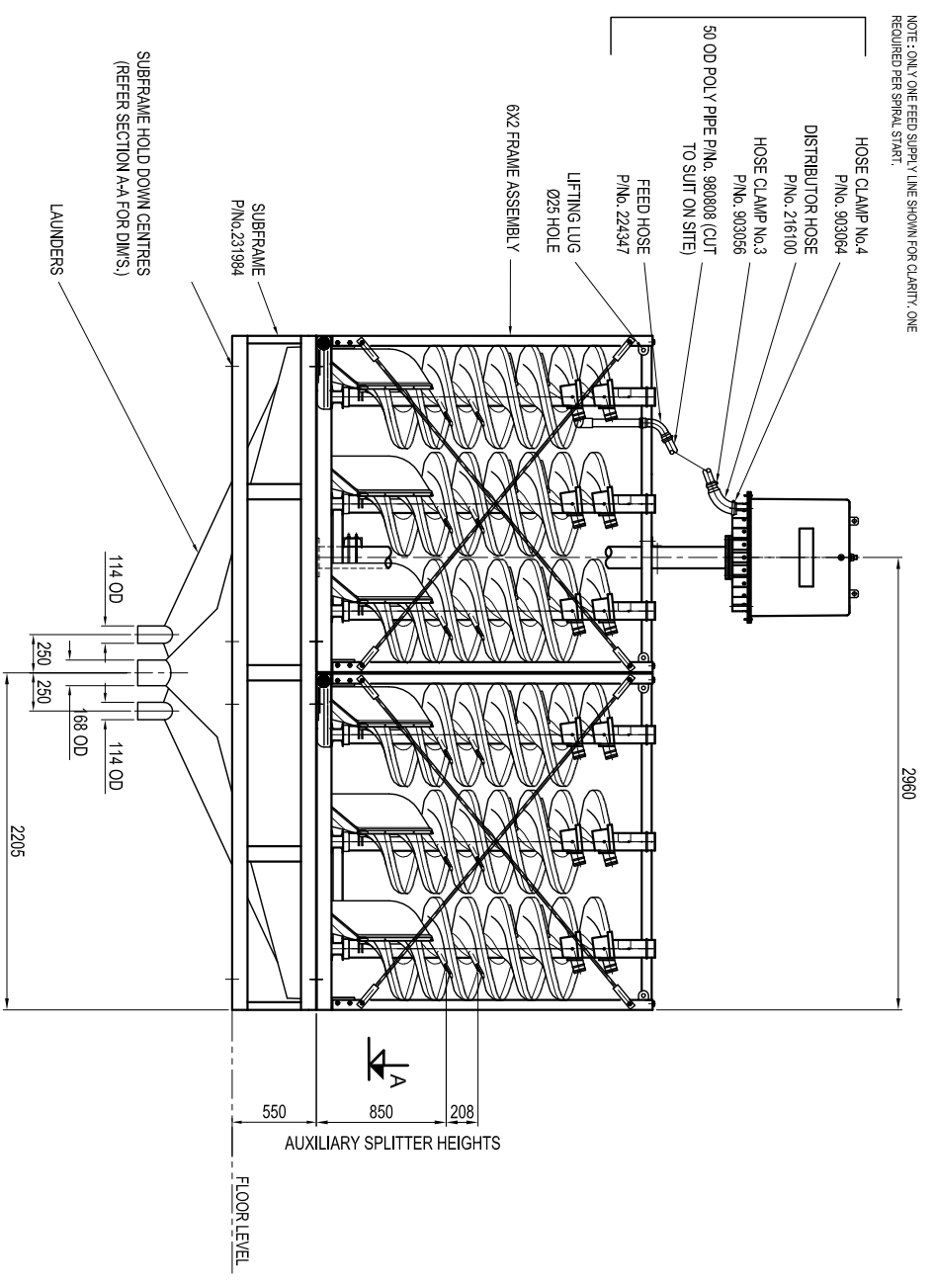


PLAN
NOTE: DISTRIBUTOR & SECTION AA
NOT SHOWN FOR CLARITY

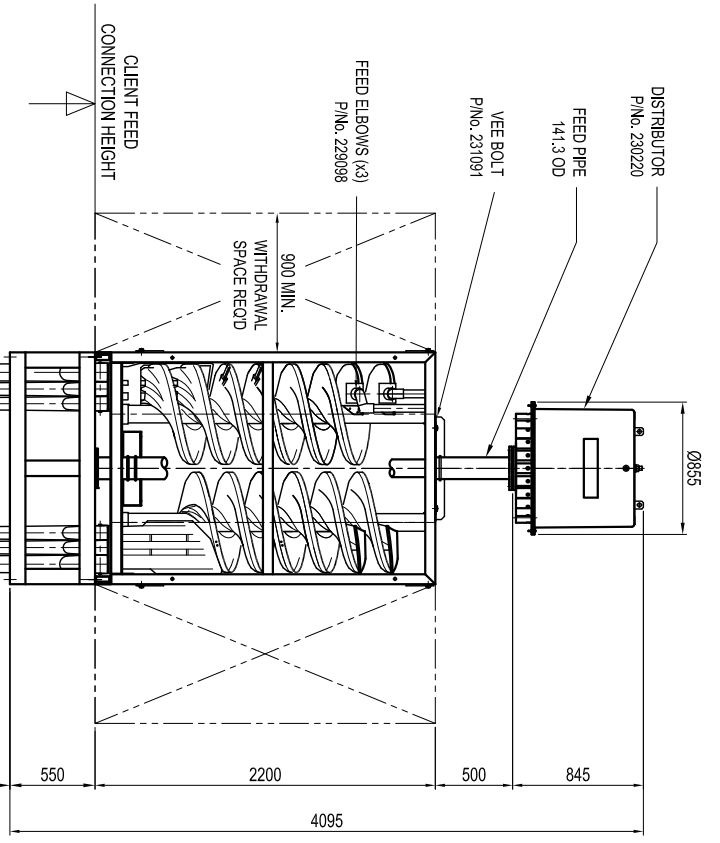


8 x Ø19 HOLES THRU BOTTOM FLANGE OF SUBFRAME - USE TO BOLT TO CLIENT STEELWORK

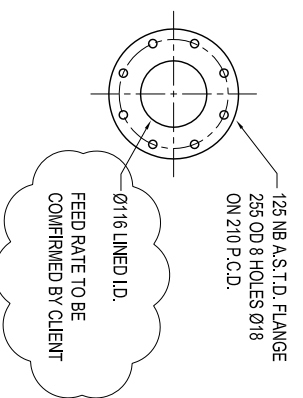


ELEVATION

SIDE



FEED CONNECTION DETAIL
NOT TO SCALE



**WARNING: SPIRALS ARE MADE FROM FLAMMABLE MATERIALS - NO WELDING, GAS CUTTING, GRINDING OR NAKED FLAMES PERMITTED NEAR SPIRALS.

ESTIMATED MASS DRY MODULE	2.07 tonnes
---------------------------	-------------

REVISION	1	2	3	4	5	6	7	8	9	10	11	12
A	GRND	ISSUED FOR CLIENT APPROVAL	DESCRIPTION	NAME	DATE	CHECKED						
				S.A.	24.03.09	J.A.S.						

COPYRIGHT © RESERVED
The design as detailed on this drawing is the property of Downer EDI Mining - MINERAL TECHNOLOGIES and/or its Associates and must be returned on demand. It is issued on the strict condition that except with the written permission of the issuing party, it shall not be used for any purpose other than that stated in the particular enquiry, order or contract with which it is issued. The reservation of copyright in this document extends from each date appearing hereon and in respect of the subject matter as it appeared at the relevant date.

LAUNDER ASSEMBLY	LN8-140
FEED PIPE	DS-595
DISTRIBUTOR ASSEMBLY	SR-353
SUBFRAME ASSEMBLY	MSR-119
FRAME ASSEMBLY	
SPIRAL ASSEMBLY	

PROJECT	MINERAL TECHNOLOGIES
TITLE	GENERAL ARRANGEMENT - BANK OF 12 M36.2 TURN TWIN START SPIRALS - B.E.MK.7 FEED SYSTEM, SUBFRAME & ENGAGED LAUNDERS
DO NOT SCALE	PRG. No. CE-5618
AUTOCAD	REV. A1

SCALE	1:25
3rd ANGLE	