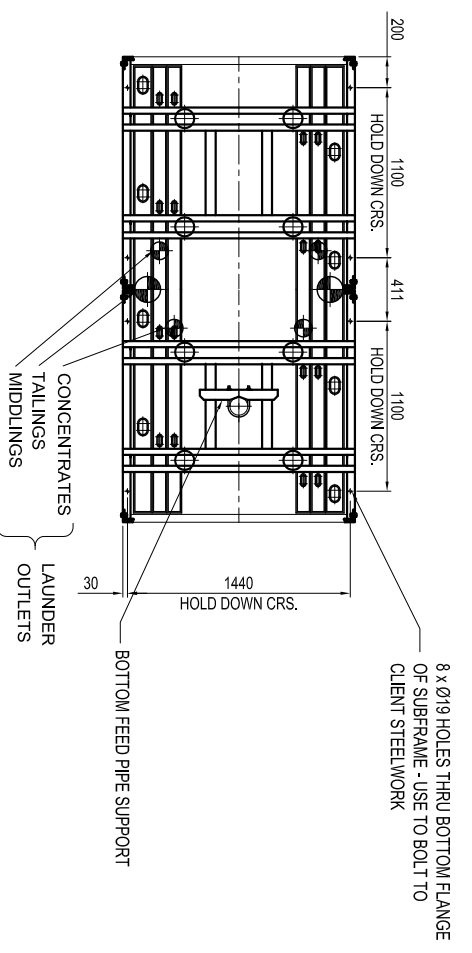
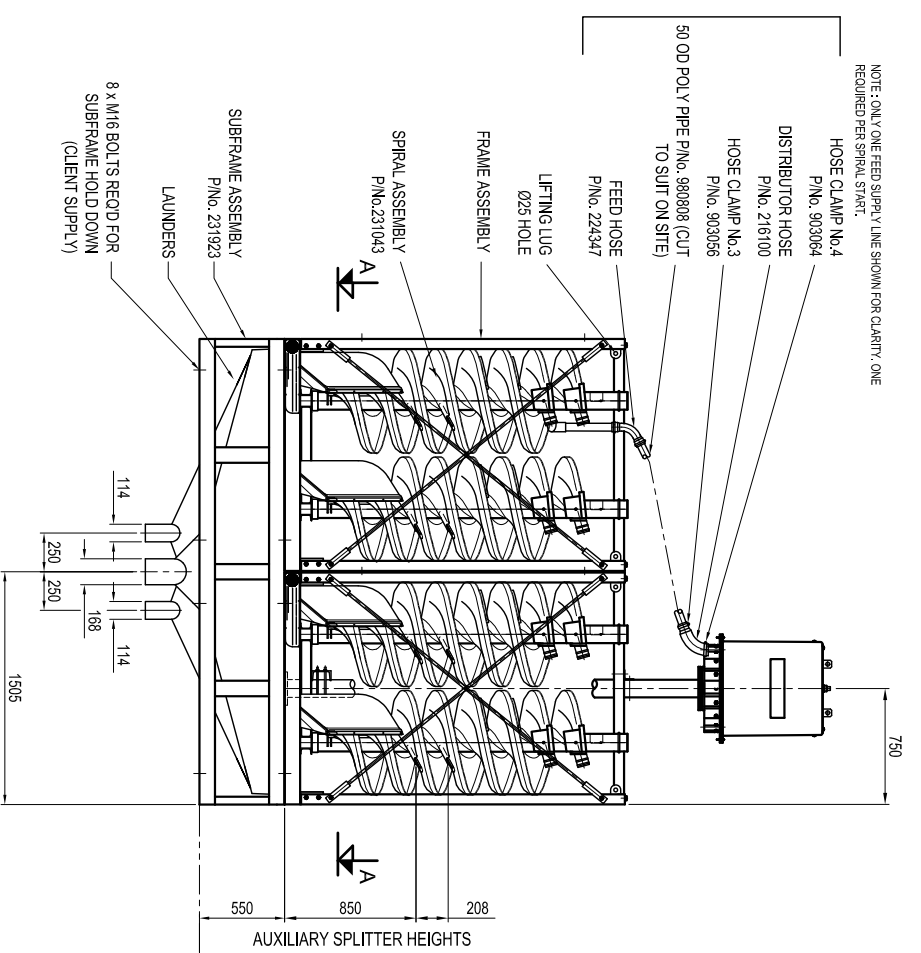


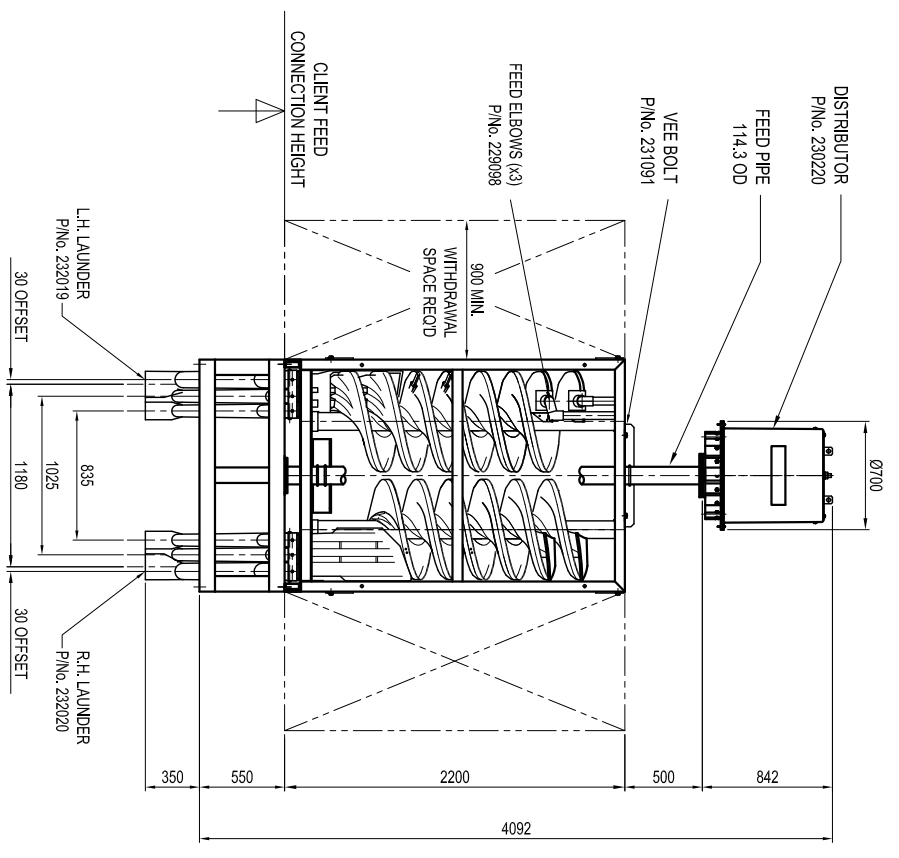
PLAN
NOTE: DISTRIBUTOR & SECTION AA NOT SHOWN FOR CLARITY



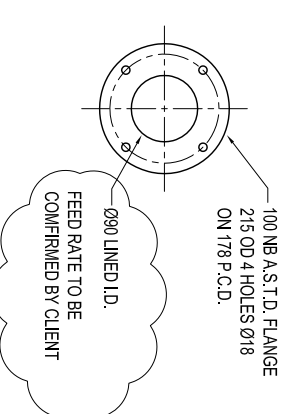
SECTION A-A



ELEVATION



SIDE



FEED CONNECTION DETAIL
NOT TO SCALE

**WARNING: SPIRALS ARE MADE FROM FLAMMABLE MATERIALS - NO WELDING, GAS CUTTING, GRINDING OR NAKED FLAMES PERMITTED NEAR SPIRALS.

ESTIMATED MASS DRY MODULE	1.44 tonnes
---------------------------	-------------

<p>Copyright © Reserved</p> <p>The design as detailed on this drawing is the property of Downer EDI Mining - MINERAL TECHNOLOGIES and/or its Associates and must be returned on demand. It is issued on the basis of conditions that explain it is not to be used for any other purpose other than that stated in the particular enquiry, order or contract with which it is issued. The reservation of copyright in this document extends from each date appearing hereon and in respect of the subject matter as it appeared at the relevant date.</p>	
<p>LAUNDRER ASSEMBLY P.No. 232019</p>	<p>LIBR-141</p>
<p>DISTRIBUTOR ASSEMBLY SUBFRAME ASSEMBLY FRAME ASSEMBLY SPIRAL ASSEMBLY</p>	<p>DS-410 SR-379 MGR-119</p>
<p>CLIENT</p>	<p>KEMI</p>
<p>CHECKED DRAWN DESIGN</p>	<p>APPROVED CLIENT</p>
<p>PROJECT</p>	<p>Mineral Technologies Downer EDI Mining - Mineral Technologies Pty Ltd - ABN 62 105 099 200 11 ELYSIUM RD, CARBON, QLD 4211 AUSTRALIA - Ph: +61 7 5669 0300</p>
<p>TITLE</p>	<p>GENERAL ARRANGEMENT - BANK OF 8 MG6.2 TWIN START SPIRALS - B,E MK.7 FEED SYSTEM, SUBFRAME & ENGAGED LAUNDERS</p>
<p>DO NOT SCALE</p>	<p>REV. No.</p>
<p>AUTOCAD</p>	<p>CE-5617</p>
<p>SCALE</p>	<p>1:25</p>
<p>REV.</p>	<p>A1</p>